

External Authentication with Citrix GoToMyPc Corporate Edition

Authenticating Users Using SecurAccess Server by SecurEnvoy

Contact information		
SecurEnvoy	www.securenvoy.com	0845 2600010
	1210 Parkview Arlington Business Park Theale Reading RG7 4TY	
Phil Underwood	Punderwood@securenvoy.com	

Citrix GoToMyPc Corporate Edition Integration Guide

This document describes how to integrate a Citrix GoToMyPc Corporate Edition with SecurEnvoy two-factor Authentication solution called 'SecurAccess'.

Citrix GoToMyPc Corporate Edition provides - Secure Remote Access to the internal corporate PC.

SecurAccess provides two-factor, strong authentication for remote Access solutions (such as Citrix), without the complication of deploying hardware tokens or smartcards.

Two-Factor authentication is provided by the use of (your PIN and your Phone to receive the one time passcode)

SecurAccess is designed as an easy to deploy and use technology. It integrates directly into Microsoft's Active Directory and negates the need for additional User Security databases. SecurAccess consists of two core elements: a Radius Server and Authentication server. The Authentication server is directly integrated with LDAP or Active Directory in real time.

SecurEnvoy Security Server can be configured in such a way that it can use the existing Microsoft password. Utilising the Windows password as the PIN, allows the User to enter their UserID, Windows password and One Time Passcode received upon their mobile phone. This authentication request is passed via the Radius protocol to the SecurEnvoy Radius server where it carries out a Two-Factor authentication. It provides a seamless login into the Citrix GoToMyPc environment by entering three pieces of information. SecurEnvoy utilizes a web GUI for configuration, whereas the Citrix GoToMyPc environment uses a mixture of a Hosted Web interface and GUI application. All notes within this integration guide refer to this type of approach.

The equipment used for the integration process is listed below:

Citrix

Citrix GoToMyPc Corporate Edition versions 5 build 370

Microsoft

Any compatible Desktop (See www.GoToMyPc.com) for more information

In this integration guide all tests were completed with Microsoft Windows XP (SP2)

SecurEnvoy

Windows 2003 server SP1

IIS installed with SSL certificate (required for management and remote administration)

Active Directory installed or connection to Active Directory via LDAP protocol.

SecurAccess software release v3.0.010

Index

1.0 Pre Requisites.....	3
1.1 Administration Centre of GoToMyPc Corporate Edition	3
2.0 Configuration of GoToMyPc software.....	5
3.0 Configuration of SecurEnvoy.....	7
4.0 Test Logon	8
5.0 APPENDIX.....	9

1.0 Pre Requisites

It is assumed that Citrix GoToMyPc Corporate Edition software has been installed upon the relevant client pc, and that a designated administrator for the company has been setup. Securenvoy Security Server has been installed with the Radius service and has a suitable account that has read and write privileges to the Active Directory, if firewalls are between the SecurEnvoy Security server, Active Directory servers, and the client pc, additional open ports will be required.

NOTE: Add radius profiles for each GoToMyPc that you wish to use Two-Factor authentication.

1.1 Administration Centre of GoToMyPc Corporate Edition

Log on to the Web site www.gotomypc.com, using the company GoToMyPc administrator account. Navigate to the Manage Groups screen, select or create a new group of users. In this example an existing group "SecurEnvoy" was selected.

Manage Securenvoy Groups

Create and manage groups and subgroups for this account. Access administration for a specific group by clicking its name.

To view users or PCs in a group, click the respective link next to the group name.

Groups and Subgroups

Securenvoy Summary: 2 users with 3 of 50 PCs enabled

(There are currently no groups for Securenvoy.)

[Securenvoy](#) ([2 users](#) | [3 PCs](#))

[Add Group](#)

The following screen is displayed

Group Settings

Listed below are the settings for this group. Click each link to modify.

Features	Maximum PCs Per User: Unlimited Viewer Security Time-Out: 9999M; Allow user to modify Default Color Quality: True Color (Better Appearance) Enabled Features: Remember Me, Remote Printing, Desktop Shortcuts, File Transfer, Whiteboard, Guests, Chat, Shared Clipboard Disabled Features: Lock upon Disconnect, Screen Blanking, Keyboard/Mouse Locking, Access Activity Log
Account Password	Password Expiration: Never Remind Users: Never Password Reuse: Allow previous passwords Failed Authentication: Deny access for 5M; never lock Web-Site
Host Access	Access Code Expiration: Never Remind Users: Never Access Code Reuse: Allow previous access codes Failed Authentication: Deny access for 5M; never lock host
Hours of Access	Mon 24 Hours Tue 24 Hours Wed 24 Hours Thu 24 Hours Fri 24 Hours Sat 24 Hours Sun 24 Hours
Host and Client PC Authorization	Host PC Authorization: Not required Client PC Authorization: Not required
Authentication Method	Access Code Required RADIUS: Required; Show configuration

Select Authentication Method

Authentication Method for Securenvoy

Modify the authentication method for this group.

Authentication Method [User's Help](#)

Authentication requires users to submit their host PC access code. Additionally:

- One-Time Passwords are optional
- One-Time Passwords are required
- RADIUS is required
(Note: RADIUS requires configuration of each host PC.)
- Show RADIUS configuration in GoToMyPC preferences.

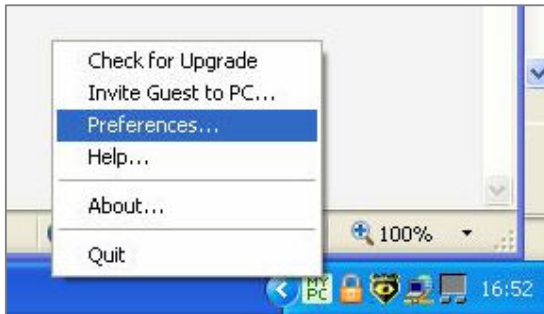
Select Radius and Click "Show RADIUS configuration in GoToMyPc configuration.

Click "Save Settings", click "Logout"

2.0 Configuration of GoToMyPc software

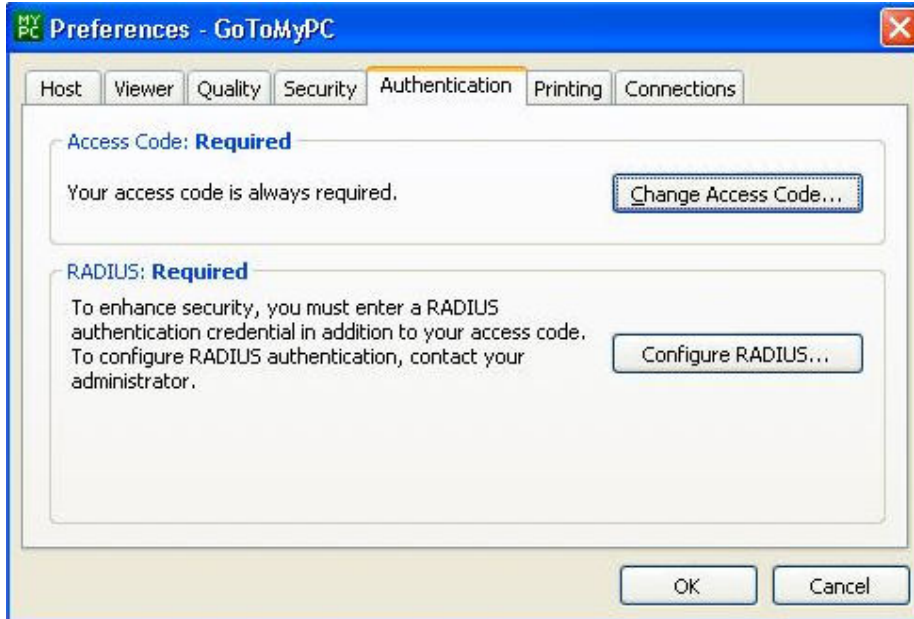
Right mouse click the "GoToMyPc" icon within the systray.

Select Preferences.

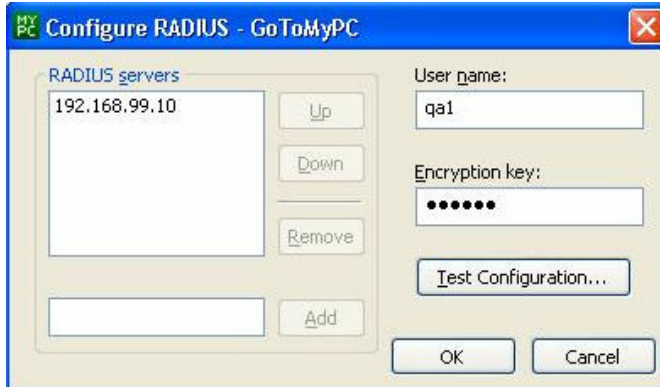


The following screen is displayed; select the authentication tab. Click "Configure Radius"

NOTE: If the Configure RADIUS button is not shown, please close and open GoToMyPc, once authenticated, the new profile will be pushed to your pc from the GoToMyPc web site.



Add the IP address of the SecurEnvoy Security server. Enter the username of the PC user; enter the pre-shared key for the radius communication.



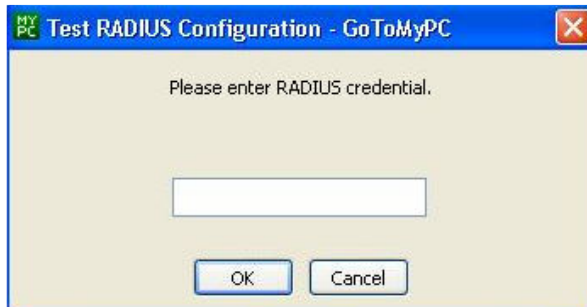
If SecurEnvoy has already been setup with Radius profiles for each GoToMyPc, and the designated user has received their passcode to the mobile phone. Click "Test Configuration" otherwise see **section 3.0 Configuration of SecurEnvoy**.

This configuration guide uses the Windows password as the PIN component.

Enter your PIN appended with your passcode, the PIN can either be the Windows password or a 4-8 digit alphanumeric sequence.

Example *Passw0rd213243*

NOTE: to provide an easier solution, SecurEnvoy can be setup to only authenticate the passcode component. Therefore the user authenticates to the GoToMyPc web site with their agreed password, and then authenticates to their PC only using the passcode. See appendix.



Click "OK", the following screen is displayed



3.0 Configuration of SecurEnvoy

To help facilitate an easy to use environment, SecurEnvoy can utilise the existing Microsoft password as the PIN. This allows the users to only remember their Domain password. SecurEnvoy supplies the second factor of authentication, which is the dynamic one time passcode (OTP) which is sent to the user's mobile phone.

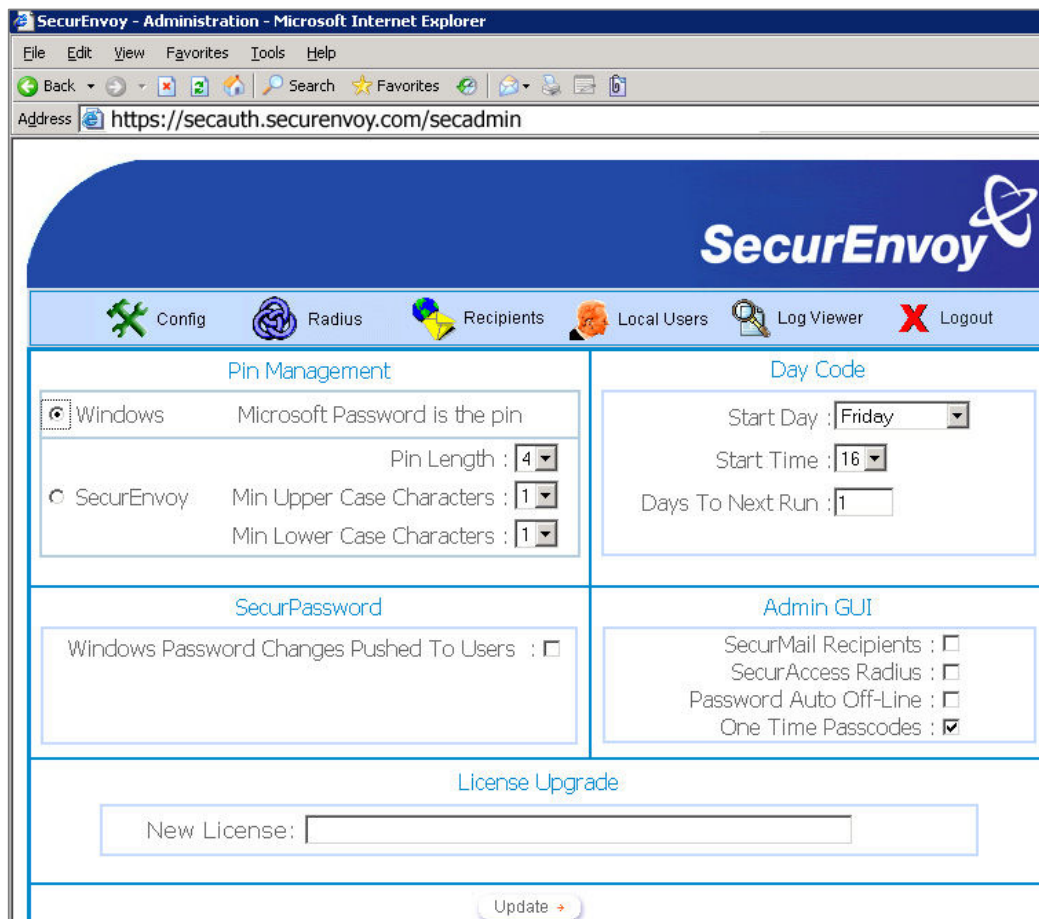
Launch the SecurEnvoy admin interface, by executing the Local Security Server Administration link on the SecurEnvoy Security Server.

Click **"Config"**

Select **Windows** – Microsoft Password is the PIN under PIN Management

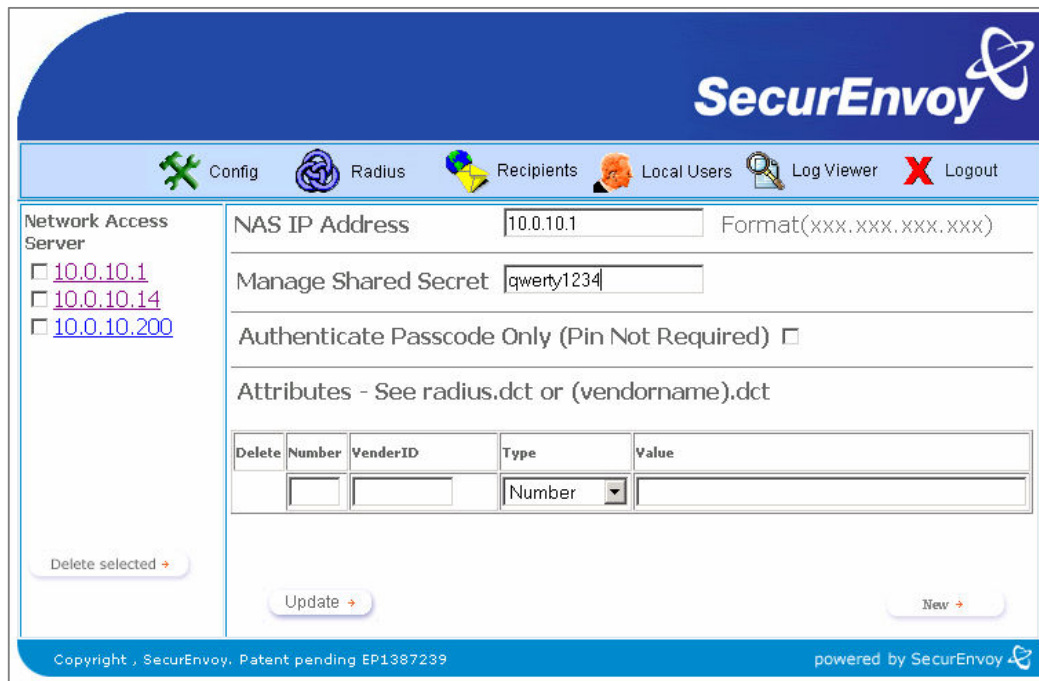
This will now use the users existing password as the PIN.

Click **"Update"** to confirm the changes



Click the "Radius" Button

Enter IP address and Shared secret for each PC that has GoToMyPc installed and wishes to use SecurEnvoy Two-Factor authentication.



Click "Update" to confirm settings.

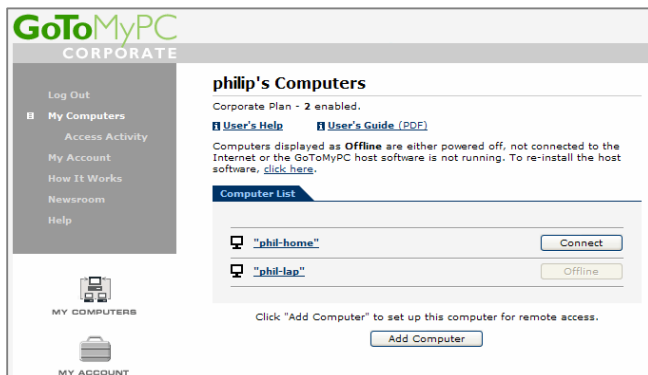
Click "Logout" when finished. This will log out of the Administrative session.

4.0 Test Logon

To access the GoToMyPc environment go to:

www.gotomypc.com

Login using your email address and GoToMyPc password, the company administrator will setup and provide these details.



The following screen is displayed. Select the Pc you wish to connect.

The following screen is displayed.

Enter your access code (this is supplied by your company administrator of GoToMyPc).
Enter your Radius credential; this is your PIN appended with the passcode.

In this example the Microsoft Windows password appended with the passcode is entered.

Example *Passw0rd213243*

Click "OK" to authenticate and access your PC remotely.



NOTE: Citrix GoToMyPc has a limitation on the maximum number of characters it can pass for the RADIUS credential. This maximum is 16, therefore when using the Microsoft password is the PIN, the Microsoft password should be 10 characters or shorter.

APPENDIX

SecurEnvoy can be setup to authenticate the passcode only component. Two-Factors are still being utilised. They are the Citrix GoToMyPc Access codes (which is static) and the dynamic one time passcode.

To set up passcode only authentication.

Go to the SecurEnvoy admin GUI, select "Radius", and then select the relevant radius entries. Click the checkbox to allow "authenticate passcode only". Click "Update" to confirm settings